

NOTE:
 SHADED AREA DEEDED FOR
 HIGHWAY PURPOSES. THIS
 PLAN SUPERSEDES ALL
 PREVIOUSLY COMPLETED MAPS.

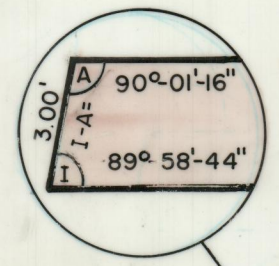
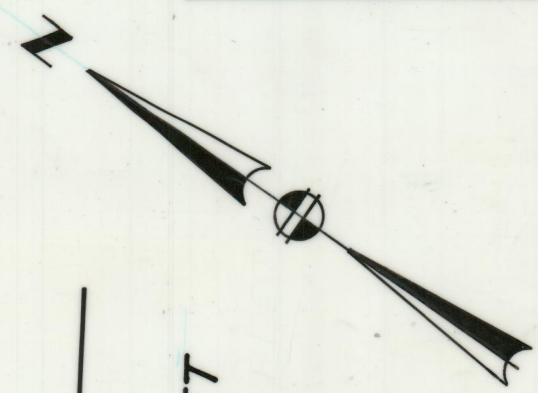
PLAT OF
GREENE STREET

Widening

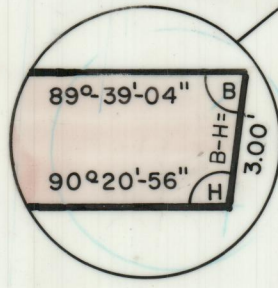
From Washington Street To Westminster Street

Scale 1"=40'

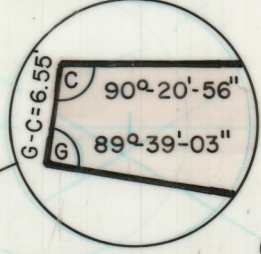
PROVIDENCE, R. I.
 P. W. DEPT. - ENGINEERING OFFICE
 STREET LINE SECTION
 Plan No. 064267
 Date November 3, 1983



WASHINGTON STREET



GARDEN STREET



WESTMINSTER STREET

A-B = 101.58'
 H-I = 101.56'
 53.15'
 G-C = 6.55'
 C-D = 262.83'
 F 18.94' Δ = 2°-51'-31" R=4890.00' L=243.97' T=122.01' 89° 42'-54" D 12.64' D-E =

.65' ON F. IRON POST
 .61' ON F. IRON POST
 .09' ON F. BK. TO CHORD
 .22' ON P.C.F. BK. TO CHORD
 .33' ON F. BK. WALL TO CHORD
 .40' ON F. BK. WALL TO CHORD
 TO CHORD 2.84' OFF F. BK. TO CHORD
 2.34' OFF F. BK. TO CHORD
 TO CHORD 6.24' OFF F. BK.

PREPARED BY
GAROFALO
 LEONARD A. GAROFALO & ASSOCIATES, INC.
 ENGINEERS / SURVEYORS / PLANNERS
 SUITE 4A, 101 DYER STREET
 PROVIDENCE, R.I. 02903
 DATE: JANUARY 5, 1981
 REVISED: NOV. 1981

OFFICE NO. 27333
 DRAWER 89
 SHEET B-30